

Solutions for Sustainable Development

The Millennium Institute

...in partnership with **UNEP** and the **Biovision Foundation**

UNCTAD-WIF
Geneva
15 October, 2014

Hans R. Herren
President & CEO Millennium Institute
Founder & President Biovision Foundation

hh@millennium-institute.org
www.millennium-institute.org



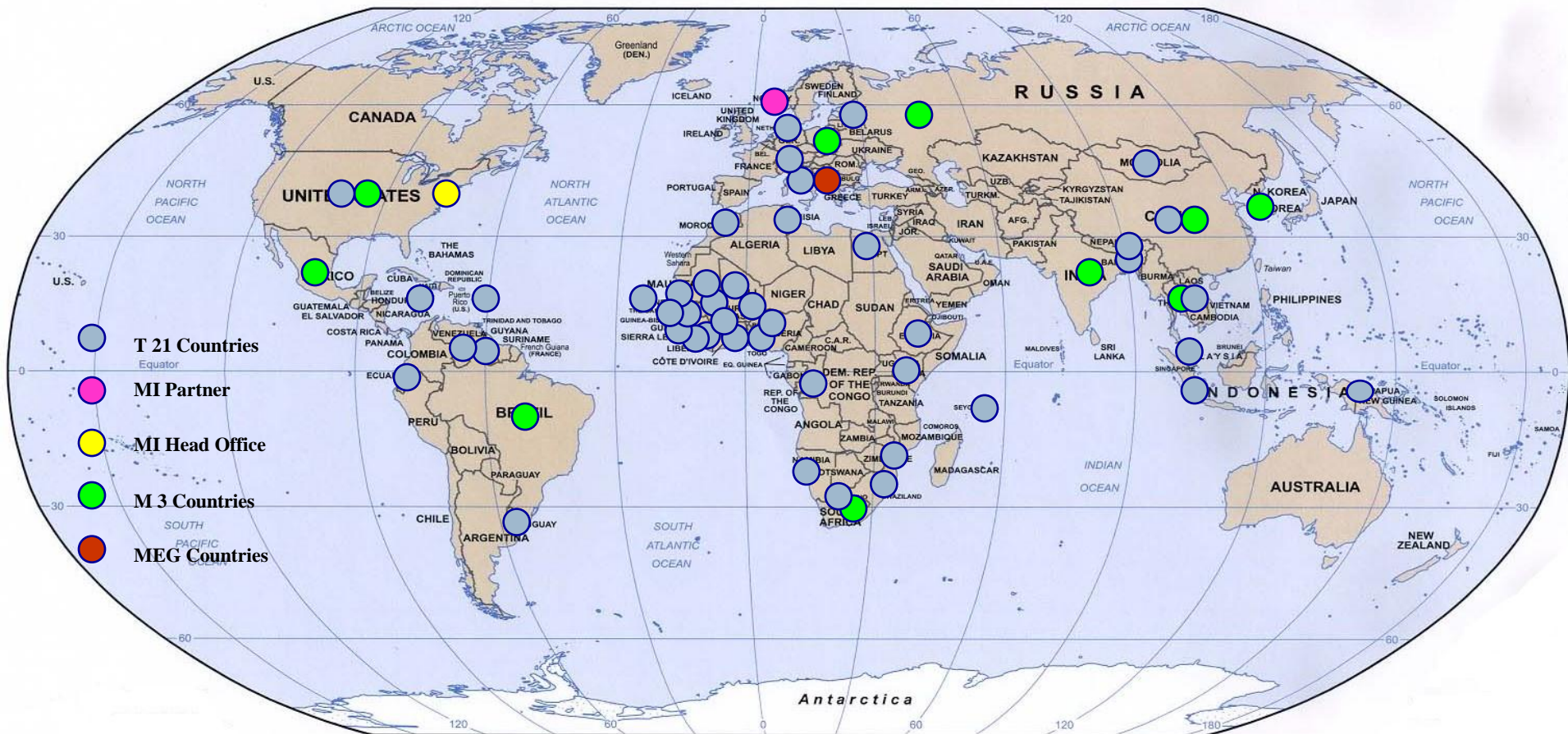
The Millennium Institute

- **MI is a not for profit organization established in 1983 to promote holistic, long-term strategic planning**
- **MI's Vision is a world in which decisions makers apply extensive knowledge and a systemic perspective to bring about a sustainable, equitable and peaceful global society through good governance**

Biovision Foundation

- **Non-governmental Organisation based in Zurich, Switzerland**
- **Supports proven and integrated solutions and methods to strengthen sustainable agriculture and food systems**
- **Implements advocacy work to foster the implementation of sustainable development**

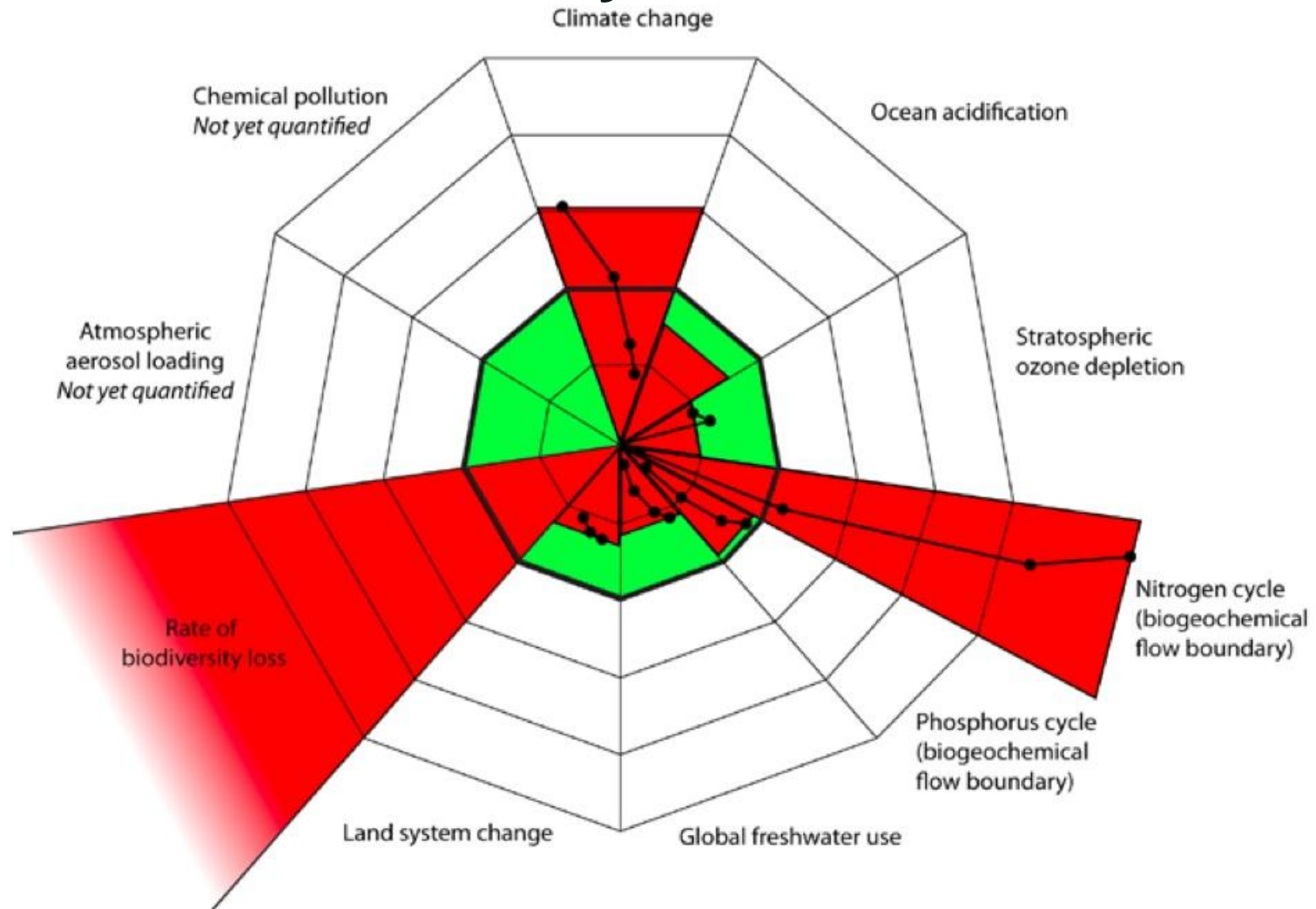
MI around the World



The development challenges

- **Manage energy and natural resources to assure the sustainability of the ecological foundation (planetary boundaries)**
- **Enable social structures and governance to function equitably**
- **Provide social and environmental services as well economic sustainable growth to reduce poverty and inequity**
- **Take account of the vital interactions among and across the Economic, Environmental, and Social dimensions**
- **Mitigate and adapt to climate change and protect the environment**

The crucial and connected challenges that need to be tackled: Planetary boundaries



MI's approach and models

MI's provides a service to develop and use tools and approaches for integrated, multistakeholder sustainable development policy planning

Levels: Global, regional, national and local

Sectors: All relevant sectors, individual or interconnected for customized policy development, analysis and M&E

Tools: System Dynamics models (T21 and derivatives)

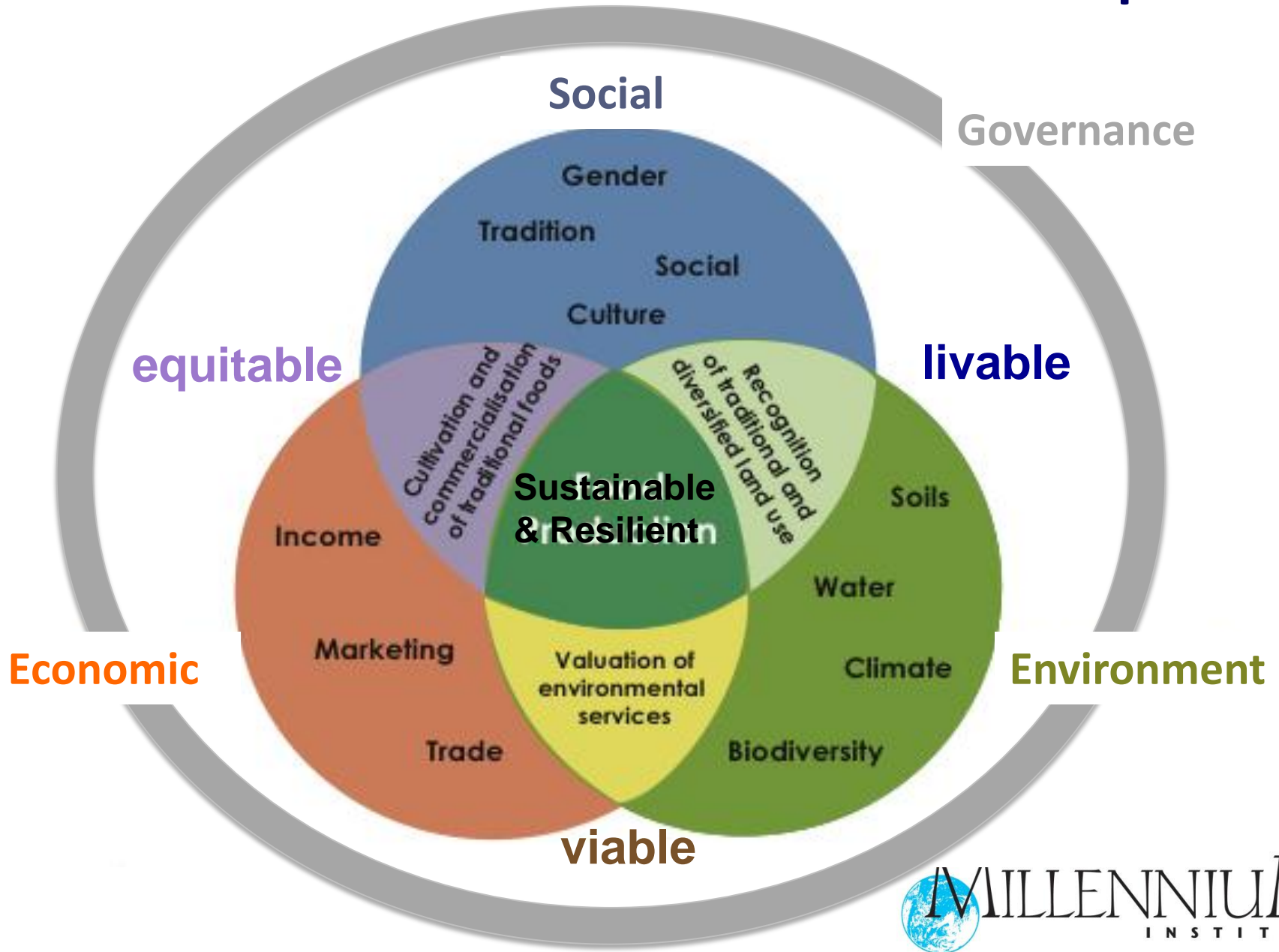
MI's approach and models

Aim: Inform sustainable development policies to meet strategic objectives (ROI)

Activities: Multistakeholder and group modeling exercises, capacity development (system thinking, modeling, policy analysis, M&E)

Areas: MDGs/SDGs; Road maps for national strategic development plan goals; CC mitigation/adaptation; energy; poverty/sustainable development; peace and security; etc.

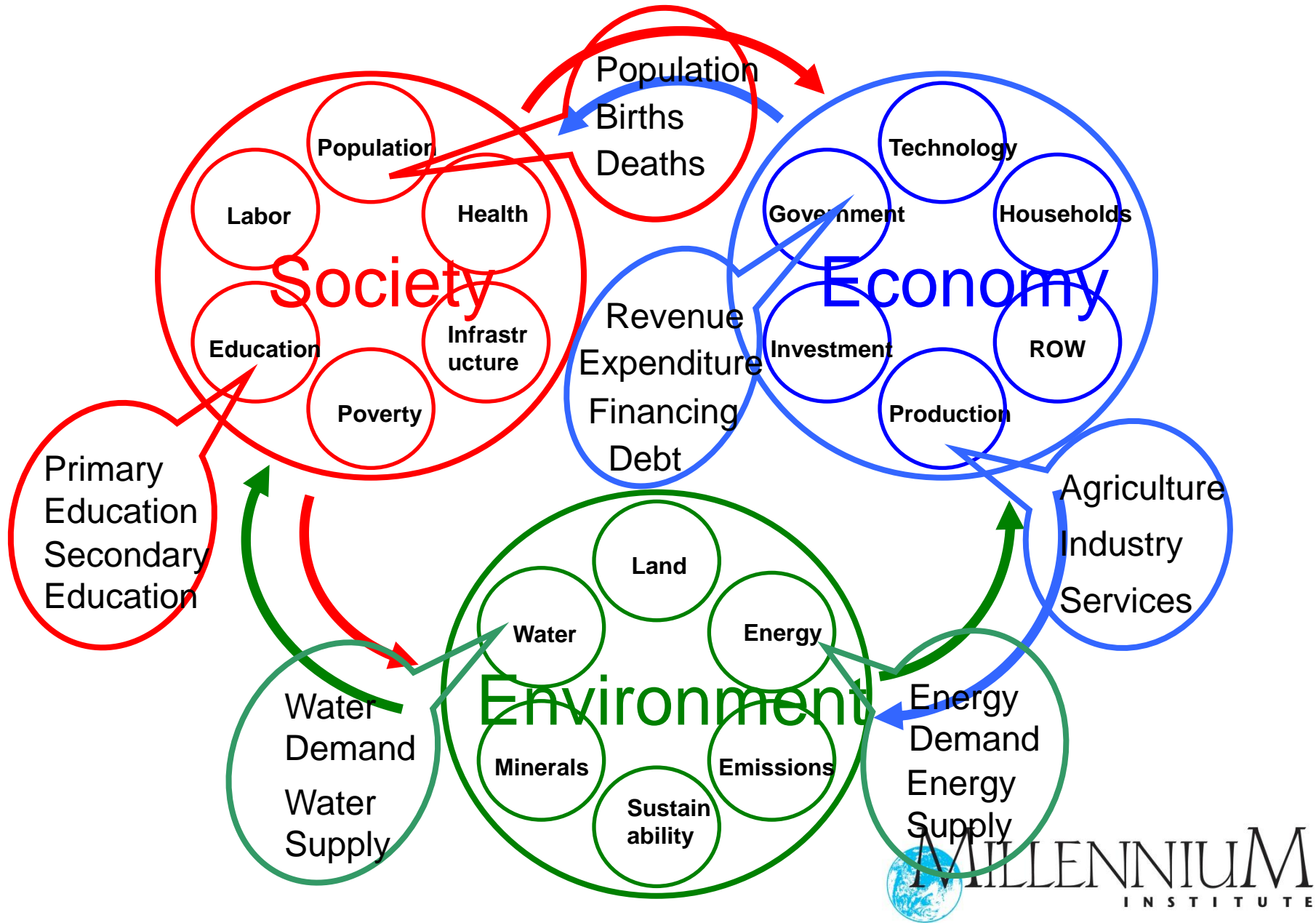
The 3 +1 dimensions of sustainable development



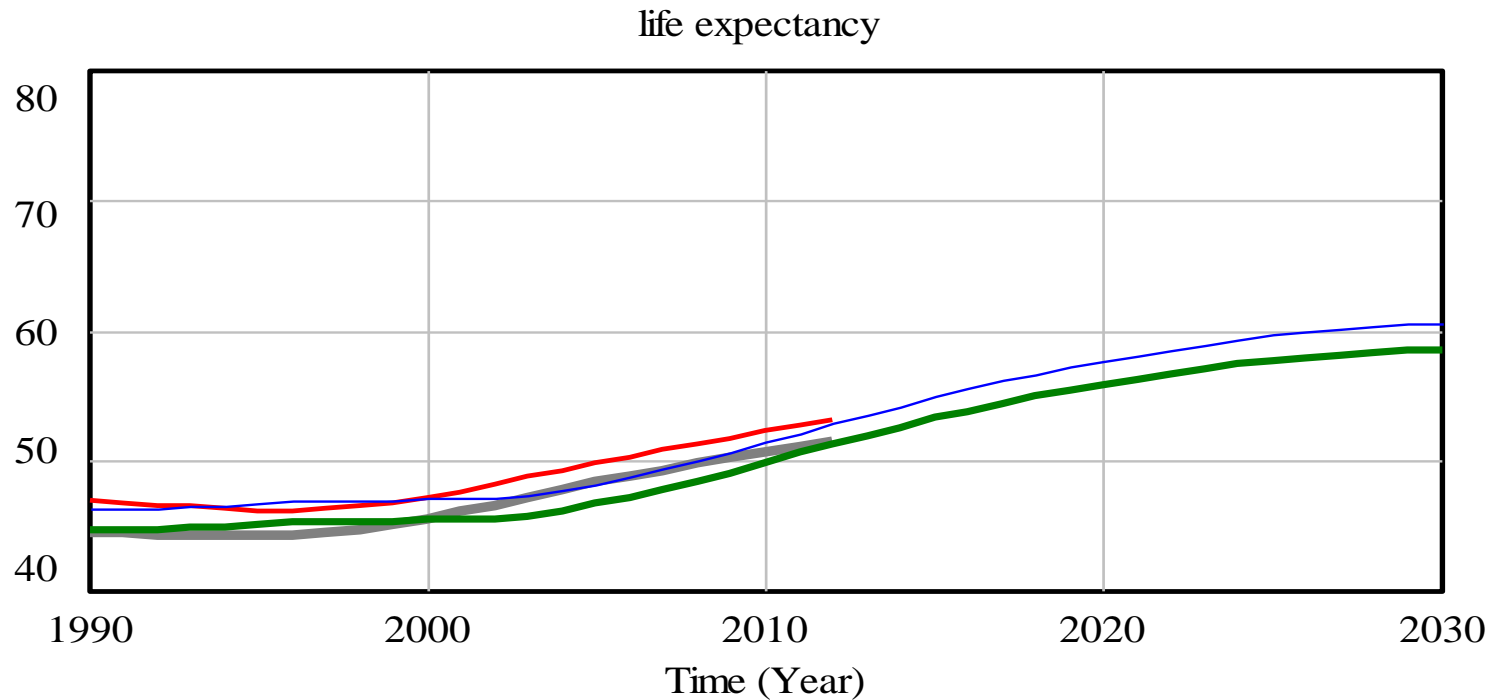
Why choose a systems approach with the Threshold 21 (T21) model

- ***Integrated*** tool linking economic, social, and environmental sectors
- Based on ***real-world causal relations***, not just theory
- ***Flexible*** with scenarios or ***what if*** options to simulate the possible consequences of selected policy choices
- Fast, ***user-friendly, transparent, peer reviewed and based on best available science***
- Supports productive ***dialogue and participatory decision making*** among gov ministries and other stakeholders

T21 basic structure

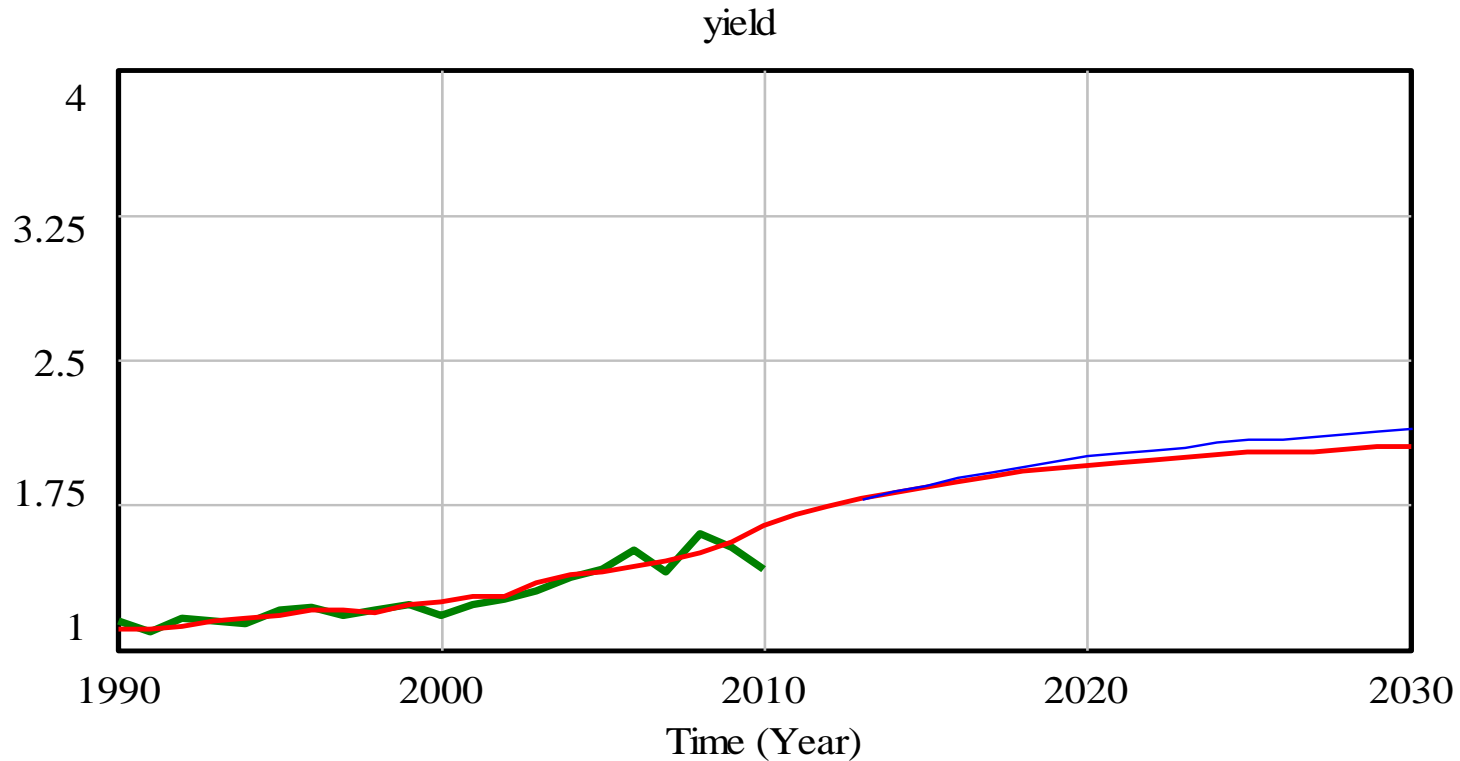


Historical comparison



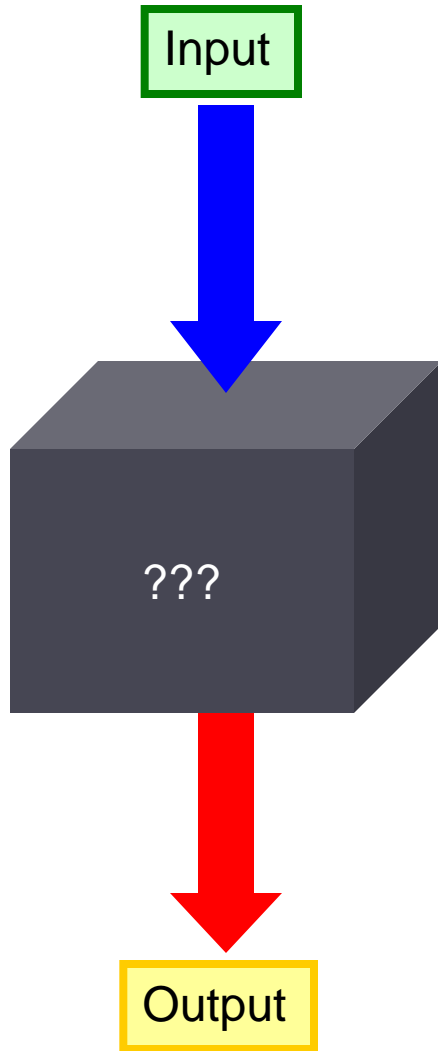
life expectancy[FEMALE] : Baseline ————— Year
life expectancy[FEMALE] : history\NigeriaAAP-Data ————— Year
life expectancy[MALE] : Baseline ————— Year
life expectancy[MALE] : history\NigeriaAAP-Data ————— Year

Scenario comparison

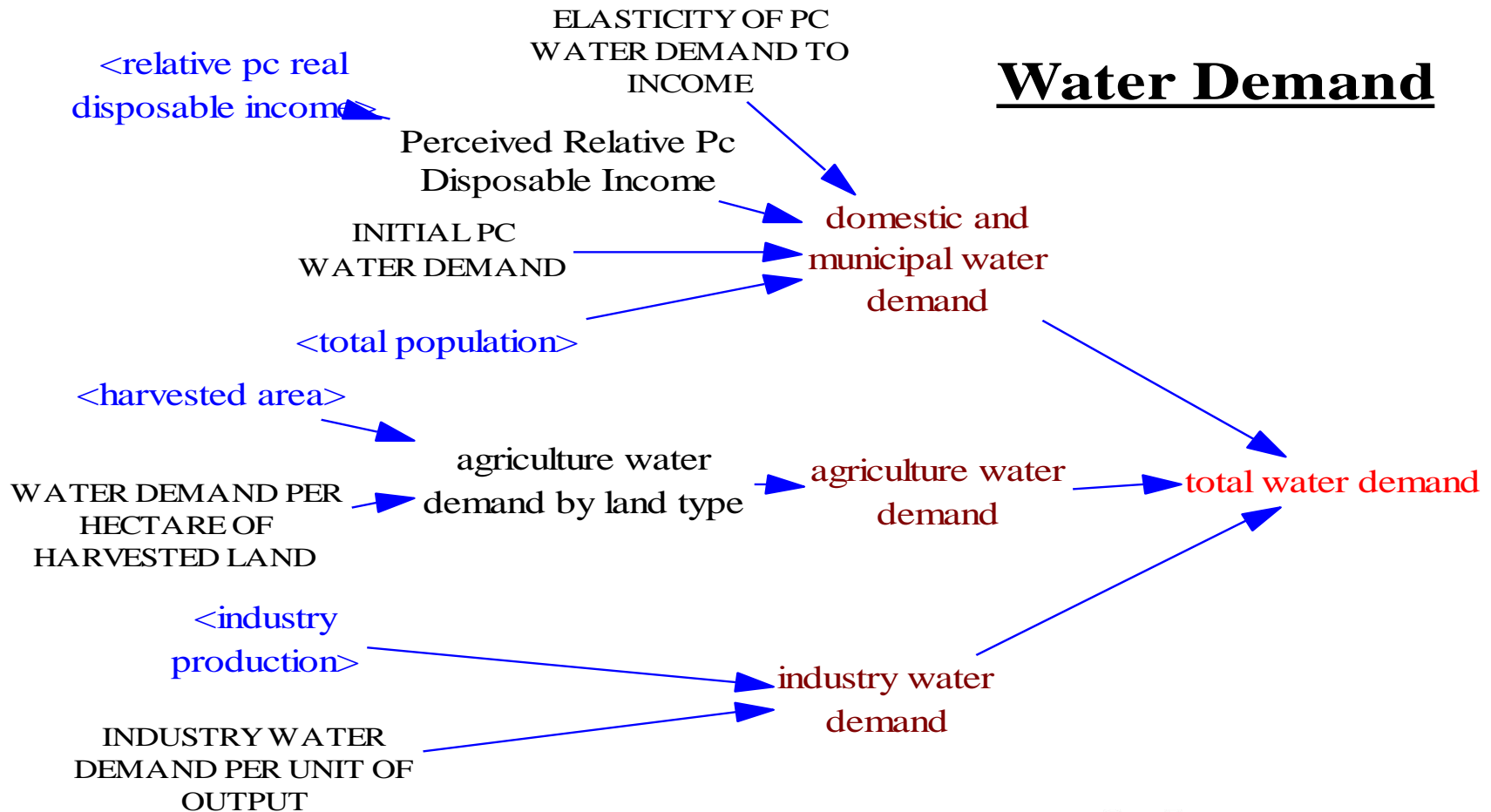


yield[CEREAL] : Optimistic — Ton/(Year*Ha)
yield[CEREAL] : Baseline — Ton/(Year*Ha)
yield[CEREAL] : history\NigeriaAAP-Data — Ton/(Year*Ha)

T21 = Transparency



T21 = Transparency



Integrating Planning Tools for success

Long-term

Med-term

Short-term

National Vision

National Development Plan

Mid Term Strategic Framework

Yearly Budgets

DC-Spreadsheet
CGE-ME
System Dynamics

T21 - Promoting cooperation and change

- **T21 is a tool to bring stakeholders together**
- **Builds support by taking account of each party's concerns (consensus, participatory)**
- **Generates integrated scenarios, compares them and visualizes the results**
- **Helps understand synergies and negative feedbacks to reach consensus**
- **Is valuable for all Governments and Development Agencies (good governance/accountability) and the Private Sector to optimize ROI in the 3Ds**

MI's activities

Sustainable strategic development, customized models, and reports assisted many countries

- **CC Mitigation and Adaptation / Green Economy:** USA, China, Denmark, Ecuador, Namibia, Kenya, Nigeria, Senegal, Burkina Faso, Ghana, Rwanda, Mauritius, Uruguay, Morocco, Peru
- **Food and nutrition security: Senegal, Kenya, Ethiopia**
- **Poverty, MDGs, Malaria, HIV/AIDS:** Ghana, Mali, Malawi, Mozambique, Jamaica, Bhutan, Swaziland, Kenya
- **Natural disasters and External shocks:** Jamaica, Mali, Mozambique, USA, Denmark, Mongolia
- **Sustainable Development:** Papua, Maui, ECOWAS, Venezuela, Mongolia, Malaysia
- **Business:** GM, National Commission on Energy Policy
- **Post conflict:** West Balkan

***You cannot solve the problem with the same
kind of thinking that created the problem
Albert Einstein***

Thank you

hh@millennium-institute.org

www.millennium-institute .org



UNEP and the iGER

- **iGER focus: positive macro economic effects of green investments in the 3 sustainable development dimensions**
- **Model applied in twelve sectors and global scale**
- **Incorporate links across sectors, and within them to optimize the synergies and reduce negative feedbacks and overlaps, gaps**
- **Demonstrates effects of Green investments and shows long term benefits compared to BAU**
- **Supports policymakers design workable and affordable green development paths**

Implementation of a multistakeholder policy design, analysis and M&E (Kenya, Senegal, Ethiopia)

